

# Catalogue for partners

2024

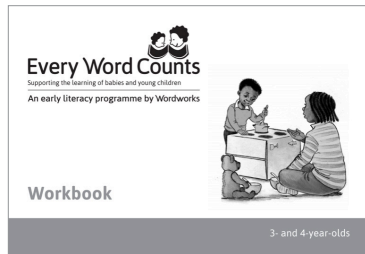


## Every Word Counts

Supporting the learning of babies and young children  
An early literacy programme by Wordworks

### Training materials

These training materials are designed to support the 12-hour EWC courses which are offered to those working in centre-based as well as home-based settings.

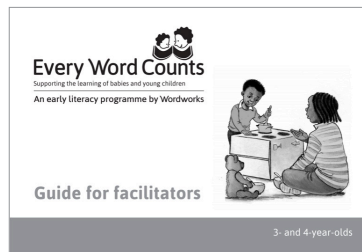


#### Workbook

The Workbook is for those attending the EWC course. It is both a reference and note book.

(Available for each of the two age-bands)

Price: R50

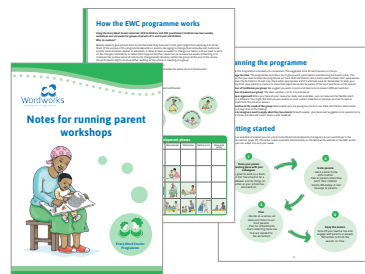


#### Guide for facilitators

This Guide is for those facilitating the EWC course. It has the same page layout as the Workbook but includes notes for facilitators and model answers. We have also included guidance for facilitators on how to facilitate adult learning.

(Available for each of the two age-bands)

Price: R50



#### Notes for running parent workshops

These notes support ECD practitioners to run a series of 6 two-hour workshops for parents/caregivers to share practical ideas to support language and early literacy learning at home.

Price: R20

### Parent resources



#### Flipbook

The A4 flip book can be used to support home-visits or for sharing information with small groups.

(Available for each of the two age-bands)

Price: R270



#### Make your own

This booklet shows you how to make your own early learning resources for babies and toddlers using recycled and inexpensive materials. Activities develop early language skills and make learning fun.

(Available in English and Zulu)

Price: R35



#### T-shirt

Good news! If you have trained with Wordworks at any stage, and are in possession of a certificate, you are eligible to order as many t-shirts as you need!

Price: R160

\* We offer special network prices for Wordworks partners using our programmes.

\* Catalogues and Order forms with the latest prices are available from our office and on our website.

021 788 9233  
info@wordworks.org.za  
www.wordworks.org.za

Wordworks

\*Please note that prices of materials are subject to change due to fluctuating/increasing printing costs.\*